



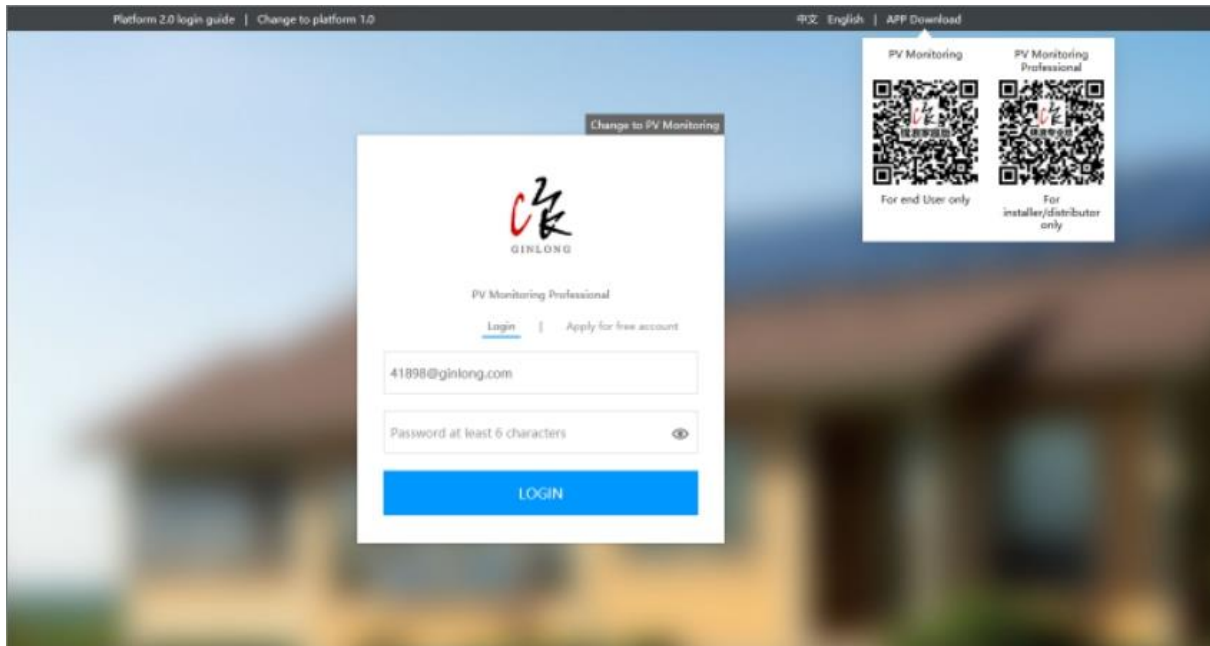
# 2G Monitoring Software Manual V1.0

2018-03-19

---

## 1.2 From Ginlong Platform 2.0 Web

1.0 users login to m.Ginlong.com and click "Platform 2.0 login guide" as follows:



Platform 2.0 Website: <http://m.ginlong.com>

Input Platform 1.0 account username & password.

A screenshot of the "Platform 2.0 login guide" form. The form has a title bar with a close button. Below the title, it says "Please enter your username and password for the platform 1.0". There are three input fields: "Platform:" with a dropdown menu showing "Ginlong(ginlongmonitoring.com)", "Username:" with the text "ginlonggzs", and "Password:" with a masked password field. A blue button at the bottom is labeled "ACCOUNT INFO FOR THE PLATFORM 2.0".

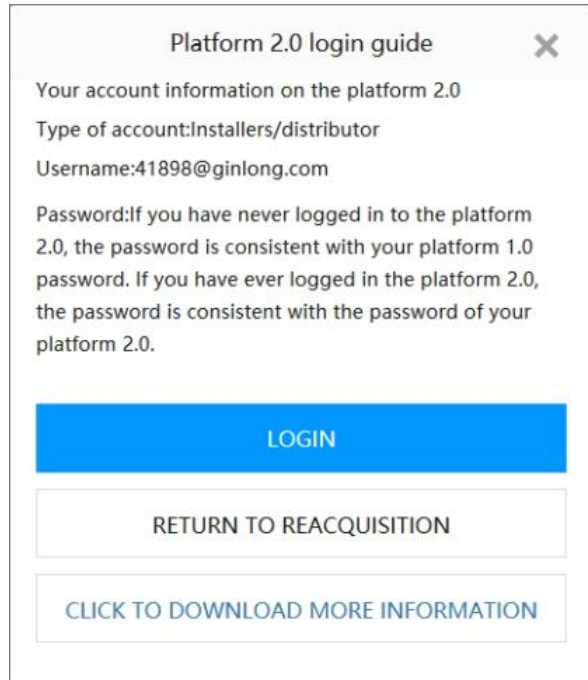
*Platform 2.0 Login Guide Notice: The system checks the username and password.*

After 1.0 users account information is verified, system will show 2.0 account information. If user had not logged in Platform 2.0 before, the system will register a new account on Platform 2.0 in the form of uid@Ginlong.com. If the user has logged in Platform 2.0 before, it will directly display user 2.0 account information. Users can click "login" to login directly with Platform 2.0 account information.

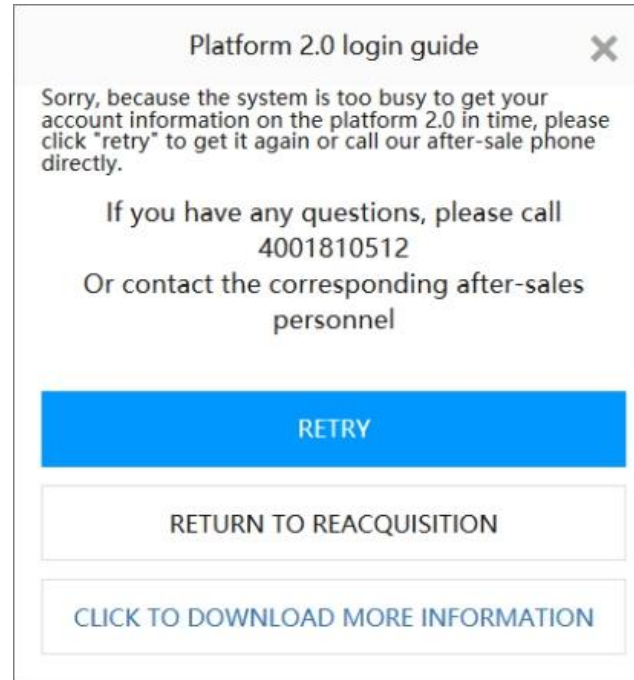
Notice:

Login button: the system automatically recognizes the account type and guides users to corresponding versions, i.e. PV owners login to m.ginlong.com (home version) and PV merchants (installers/distributors) login to m.ginlong.com (professional version).

Click to download more info button: click this button to download this document.



*Platform 2.0 Login Guide Notice: Platform 2.0 account information will show.*



*Platform 2.0 Login Guide Notice: Help guide for users with problem.*

A red square frame with a thin border, partially enclosing the text. The top and right sides are solid, while the bottom side is open, with a short horizontal line segment at the bottom left corner.

PART 02

# Ginlong Professional Version



# 1. Create Plants and WiFi Configuration

Ginlong Professional Ver. APP support creating plants and WiFi Configuration  
Ginlong Professional Ver. Web support adding plants only

- Create Plants

- WiFi Configuration

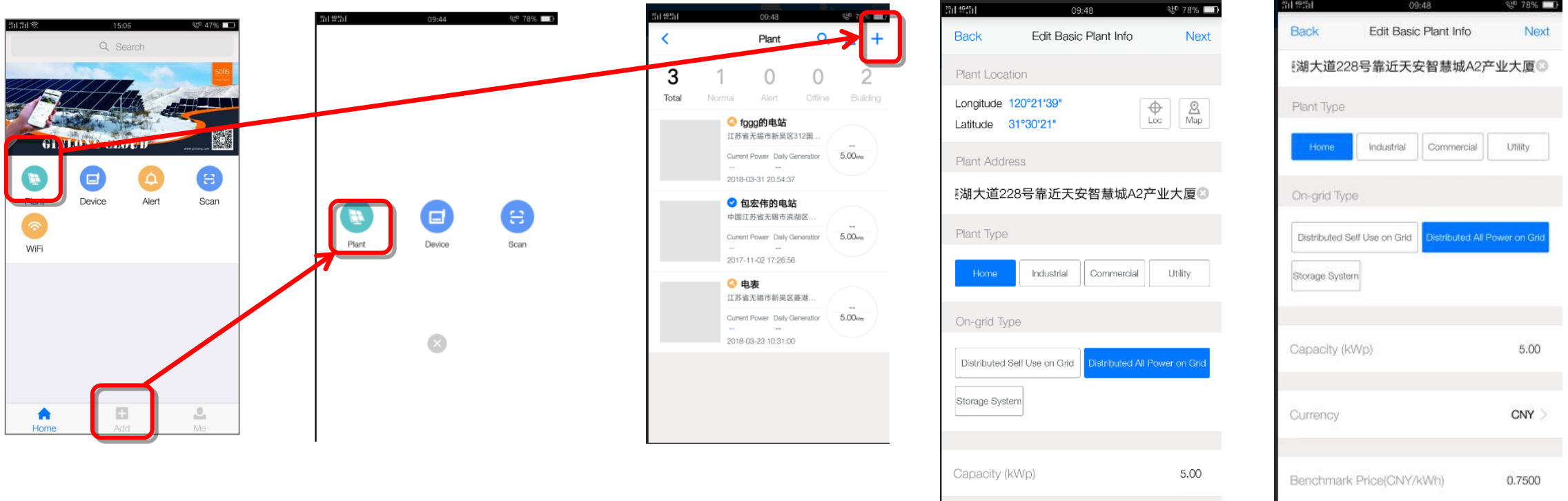
## 2.1 Create Plants

### 2.1.1 Create a new Plant

#### A. Ginlong Professional Ver. APP

##### 1. Start to create a new plant

Click "add" at the bottom main menu and click "plant". Or, click the plant icon, enter the list of power stations, and then click "+" to start to create a new plant .



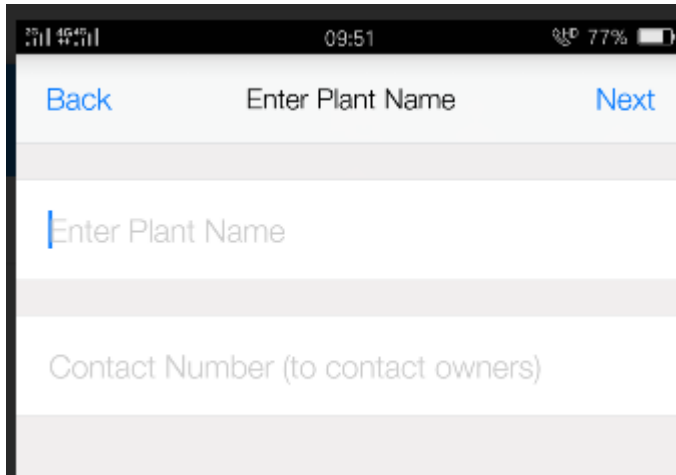
##### 2. Scan the code

APP only supports the scanning of the bar code/QR code of dataloggers. If there is no datalogger, you can click the "no device" and jump to the next step: input plant information.

##### 3. input plant information

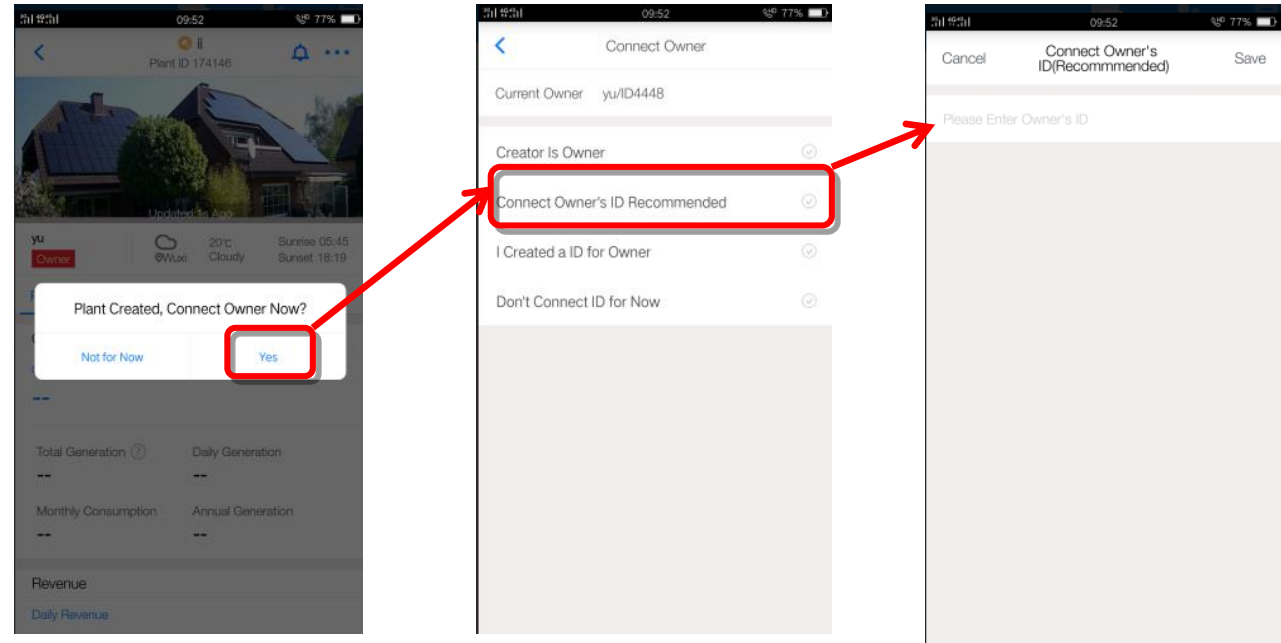
The system automatically locates the location of the station via the mobile phone GPS. If you are not in the site, you can also click "map" to select on the map.

4. Enter the name of the plant and the owner's contact number.



5. Associated with the owner

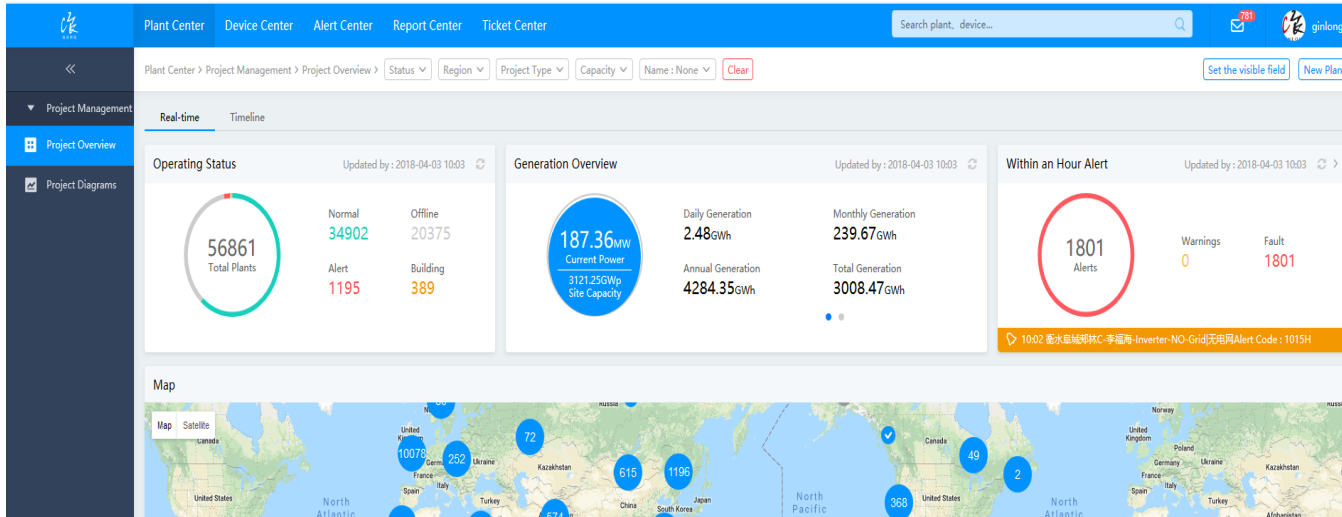
When the plant is completed, the system will prompt "Do you need to associate the plant owner?".



- The creator is the owner: select this option to indicate that the merchant who created the plant is the owner of the plant.
- Associate with owner's ID (recommended) : the owner can find the ID number on the upper part of the "my" interface in APP.
- Create an account for the owner: you can also create an account of Ginlong home version for the owner, which can only be used on the Ginlong home app. Support mobile number and mailbox (not verified), and default password is 123456.
- No. ID number: you can enter the owner's name but not the details of the Ginlong home app account.

## B. Ginlong Professional Web

### 1. Click "New plant" in the Plant Centre.



### 2. Input plant information

The 'New Plant' form includes the following fields and options:

- Name:** Text input field.
- Project Type:** Radio buttons for Residential, Commercial, Industrial, and Utility-scale.
- On-grid Type:** Radio buttons for All On-grid, Partly On-grid, Off-grid, and Storage System.
- Location:** A map showing the location in Wuxi, Jiangsu, China. The address is: China Jiangsu Sheng Wuxi Shi Binhu Qu Ling Hu Da Dao 232号-240号. Longitude: 120°21'40", Latitude: 31°30'24".
- Capacity (kWp):** Input field with value 5.00.
- Project Timezone:** Dropdown menu set to (UTC+08:00) Beijing, Chongqing, Hong Kong, Urumqi.
- Azimuth (°):** Slider set to 180°.
- Angle of Tilt (°):** Slider set to 28°.
- Currency:** Dropdown menu set to CNY.
- Benchmark Price (CNY/kWh):** Input field with value 0.75.
- Province Generation FIT (CNY/kWh):** Input field with value 0. Period (yr): 0.
- City Generation FIT (CNY/kWh):** Input field with value 0. Period (yr): 0.
- County Generation FIT (CNY/kWh):** Input field with value 0. Period (yr): 0.
- Building Cost (CNY):** Input field with value 37500.00.
- Building FIT (CNY):** Input field with value 1000.
- Loan Proportion (%):** Slider set to 0%.
- Annual Loan Rate (%):** Input field with value 0. Period (yr): 0.
- Refund Method:** Radio buttons for Fixed-basis Mortgage and Fixed-payment Mortgage.
- Contact Number:** Input field.

A blue 'Next' button is located at the bottom right of the form.



### 3. Association owners and members of internal organizations

1 Confirm Plant Description 2 Confirm Correlation Info

Internal Association User Search for user or click to select

Creator ginlong

Owner I Am Owner [What Is Owner?](#)

Back Complete

### A. Interrelated users: connect the plant to other users within the company.

1 Confirm Plant Description 2 Confirm Correlation Info

Internal Association User Search for user or click to select

The following is all the business Account, please click to select

Creator g Vivintsolar  
大海科源

Owner Demo演示电站

Select All Selected : 0/1000

Back Complete

### B. Related owner: the plant is bound to the owner's account (Ginlong home version account)

1 Confirm Plant Description 2 Confirm Correlation Info

Internal Association User Search for user or click to select

Creator ginlong

Owner I Am Owner [What Is Owner?](#)

I Am Owner  
Correlate Owner's PV Monitor ID  
Create a PV Monitor ID for Owner  
Not Correlated PV Monitor ID Now

Back Complete

- The creator is the owner: select this option to indicate that the merchant who created the plant is the owner of the plant.
- Associate with owner's ID (recommended) : the owner can find the ID number on the upper part of the "my" interface in APP.
- Create an account for the owner: you can also create an account of Ginlong home version for the owner, which can only be used on the Ginlong home app. Support mobile number and mailbox (not verified), and default password is 123456.
- No. ID number: you can enter the owner's name but not the details of the Ginlong home app account.

#### 4. Add a device

Enter the Plant Details - Device, the system will pop up the input box, fill in the device SN number to complete the add equipment.

- Ginlong Professional Web support to add datalogger and inverter.
- Select inverter/datalogger in device type.
- Supports batch import of devices in Excel format. The import format is as follows, and all SN columns are entered in sequence.

### Add New Device

Device Type: Data Logger

Brand: SOLARMAN

SN Number:  Add Import

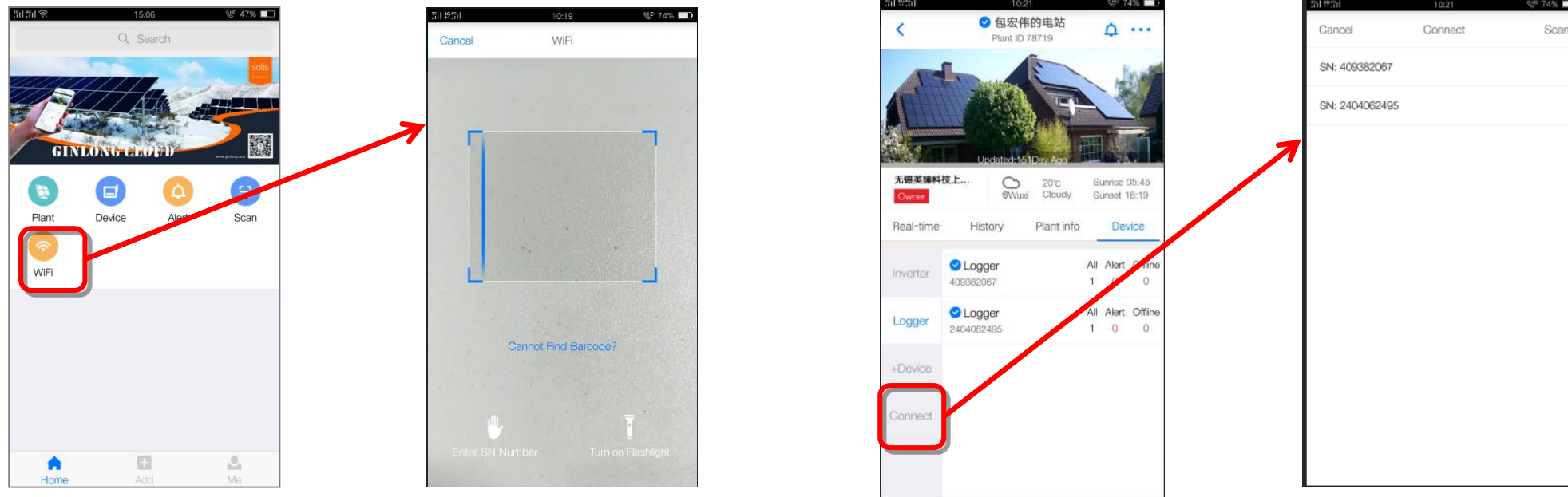
SN Number	Action
	( Not Available )

	A	B	C	D
1	1425010770			
2	1425010771			
3	1425010772			
4	1425010773			
5	1425010774			
6	1425010775			
7	1425010776			
8	1425010777			
9	1425010778			
10	1425010779			
11	1425010780			
12	1425010781			
13	1425010782			
14	1425010783			
15	1425010784			
16	1425010785			

## 2.2 WiFi Configuration

GPRS datalogger can be automatically connected to the Internet, but if it is WiFi datalogger, we need make datalogger configured to the router connected to the Internet. Ginlong Pro ver. App will support WiFi datalogger configuration to WiFi router.

1. Click the WiFi configuration icon, scan the WiFi datalogger bar code or enter the SN number directly. Or you can enter the plant, click the "device" TAB button, and then click "network" to select the SN.



2. WiFi configuration process of iOS and android is different. It is recommended to use the android WiFi configuration, will be more convenient.

### A.For Android users

1.Connect WiFi network, enter password.

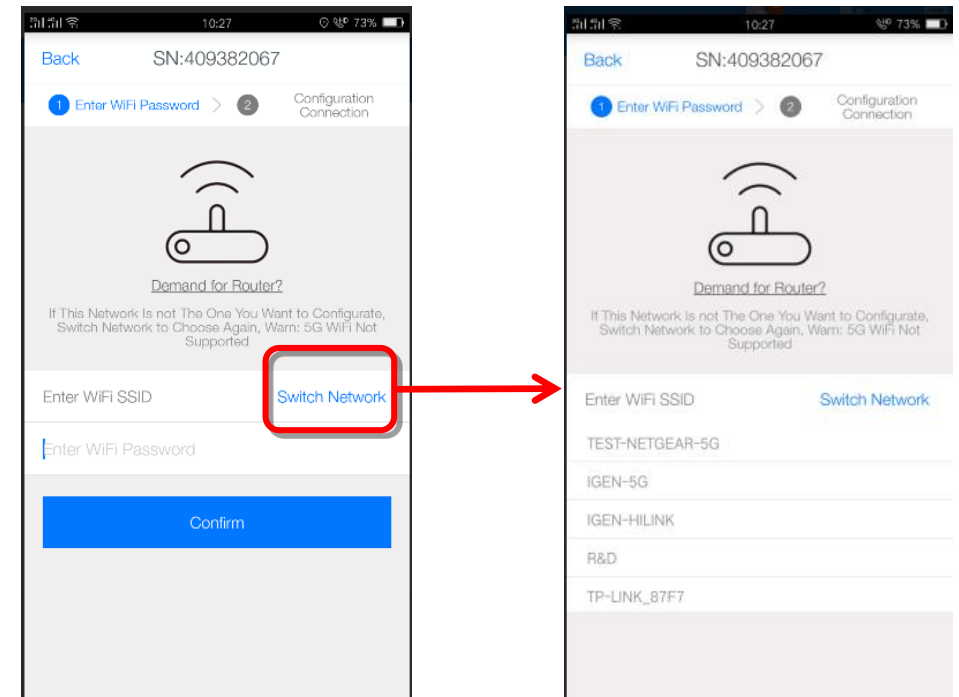
APP will automatically get the current mobile phone to connect to the Internet WiFi account, input WiFi network password to enter the configuration process. If the network is incorrect, please select switch network. You can also manually enter the network account when you switch the network account.

Note: 5G WiFi is not supported.

Tip: if you cannot connect to WiFi, try the following.

- If the signal strength of the selected network is <15%, the connection is unstable, please adjust the router's antenna position or increase the relay.
- Wireless module as the STA mode, the router's channel support range is 1 to 11.
- support WiFi STA router 802.11 b/g/n mode.
- Not support ", "" , " ; " ; " Special characters. It is suggested that the router's SSID and password use a-z, a-z, and 0-9 characters, such as do not use! @ # \$ % & \* , . ; ( ) ' " ? And other special characters.
- Some enterprises may limit the WIFI connection, so it is recommended closing limit function of the Qos.
- Support the normal routing encryption (WEP/WPAPSK WPA2PSK), does not support mixed multiple encryption methods.
- Open the router's DHCP function, otherwise unable to connect to router wifi.

If you have tried above solutions and still can't connect the router, please reset the router or restore the factory; If still can't use, please contact us to solve.



## 2. Configuration

The system automatically connects the datalogger AP network and automatically starts the configuration after the connection is successful. Please make sure the datalogger is powered on and near the phone. If the connection is unsuccessful, the system will require manual connection to the datalogger AP network.

### Tips :

- If you are unable to find the list of wireless networks (AP datalogger SN serial number), please make sure that the datalogger distance with wi-fi routers < 10 meters;
- If the above steps still can't find the AP (datalogger SN serial number), the connection or set may have problem, you may need to open the inverter back cover to check the connection module;
- Before troubleshooting, check with your inverter vendor to see if you can open the back cover of the inverter on your own. If not, please contact the inverter manufacturer customer service.

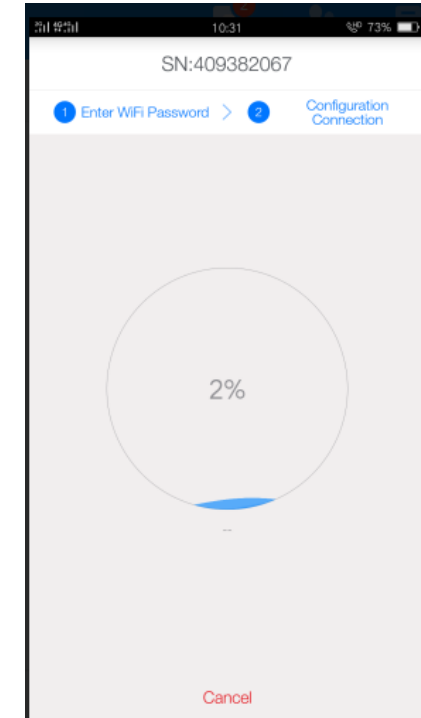
3. Wait 3-5 minutes until the configuration is successful, you can go back to the add device interface and continue to configure other devices.

If the configuration fails, the following reasons may be:

- Please click retry and carefully check the password of the router.
- The router network signal is poor, the distance between the datalogger and the router is too far. Please put the router closer to the datalogger.
- Does not meet the requirements of the datalogger to the router.

If the following situations occur, please reconfigure the network of datalogger devices:

- Router replaced
- WiFi password changed
- Router SSID changed
- Working environment has limited WIFI connections



## B. For iOS users

### 1. Connect WiFi network, enter password.

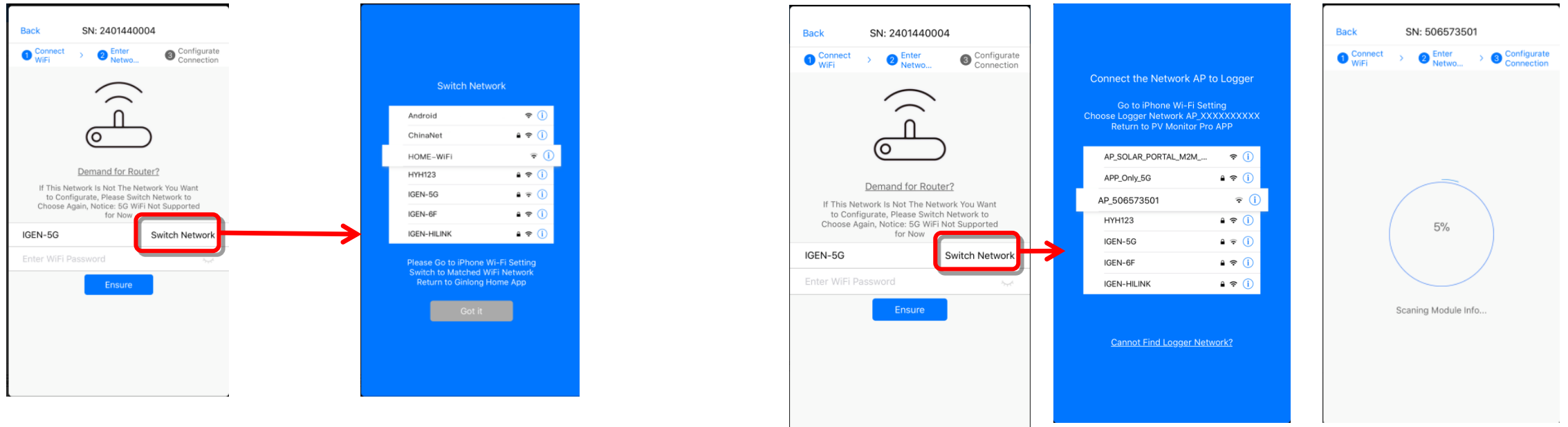
APP will automatically get the current mobile phone to connect to the Internet WiFi account, input WiFi network password to enter the configuration process. If the network is incorrect, please go to the iOS settings and select switch network. You can also manually enter the network account when you switch the network account.

Note: 5G WiFi is not supported.

### 2. Connect the datalogger AP network.

Router WiFi network password input finished, click "ok", the system will prompt you to switch to the iPhone's network Settings screen, select AP XXXXXXXX terminal network, and then return to APP, datalogger can begin configuration.

Configuration success and failure status is same as android phones.

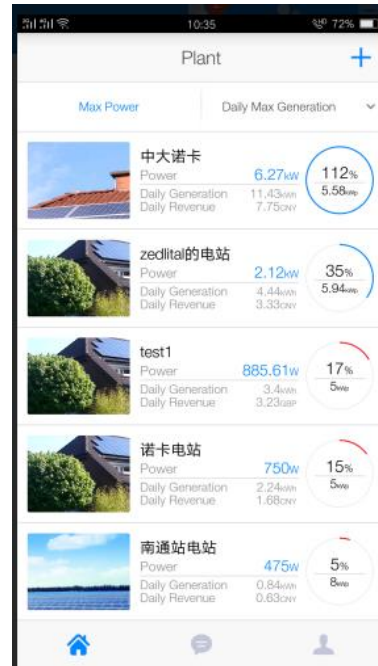
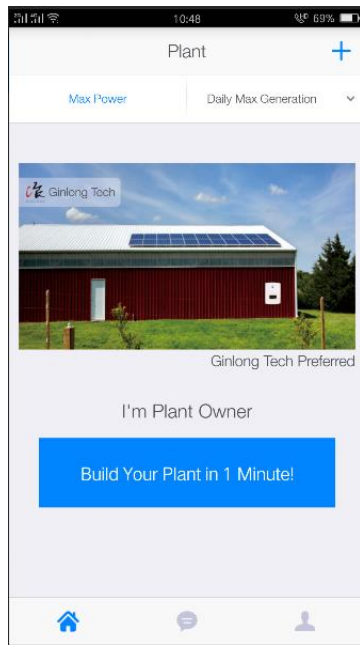


PART 03

# Ginlong Home Version

### 3.1.1 Create plants

1. In the absence of login, click "1 minute to create the power station" in the center of the screen. Click "+" in the upper right corner to create the power station.

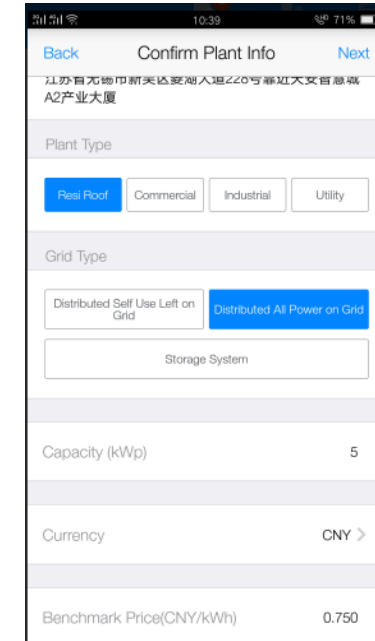
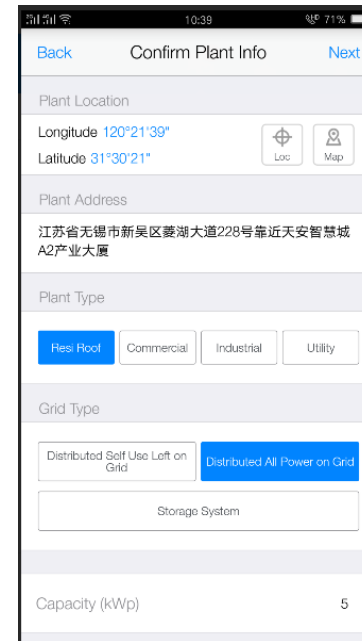


### 2. Scan the code

APP only supports the scanning of the bar code/QR code of dataloggers. If there is no datalogger, you can click the "no device" and jump to the next step: input plant information.

### 3. Input plant information

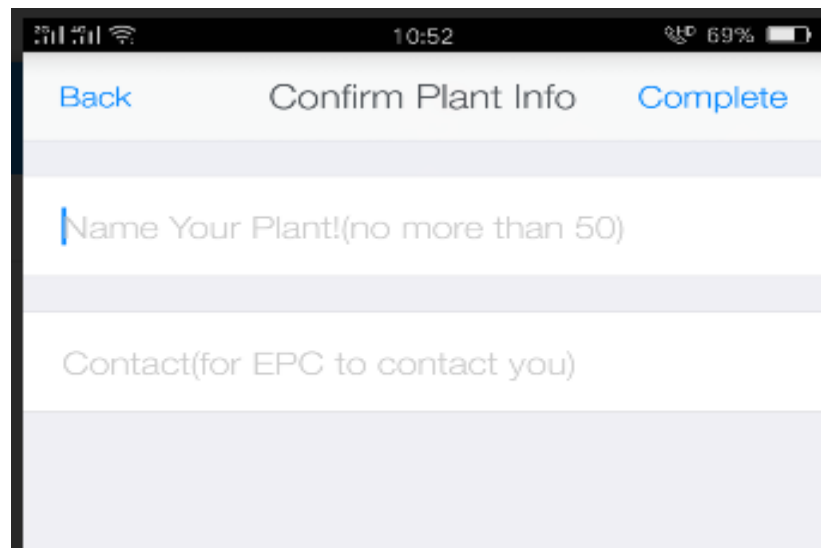
The system automatically locates the location of the station via the mobile phone GPS. If you are not in the site, you can also click "map" to select on the map.





Enter the name of the station and the owner's contact number

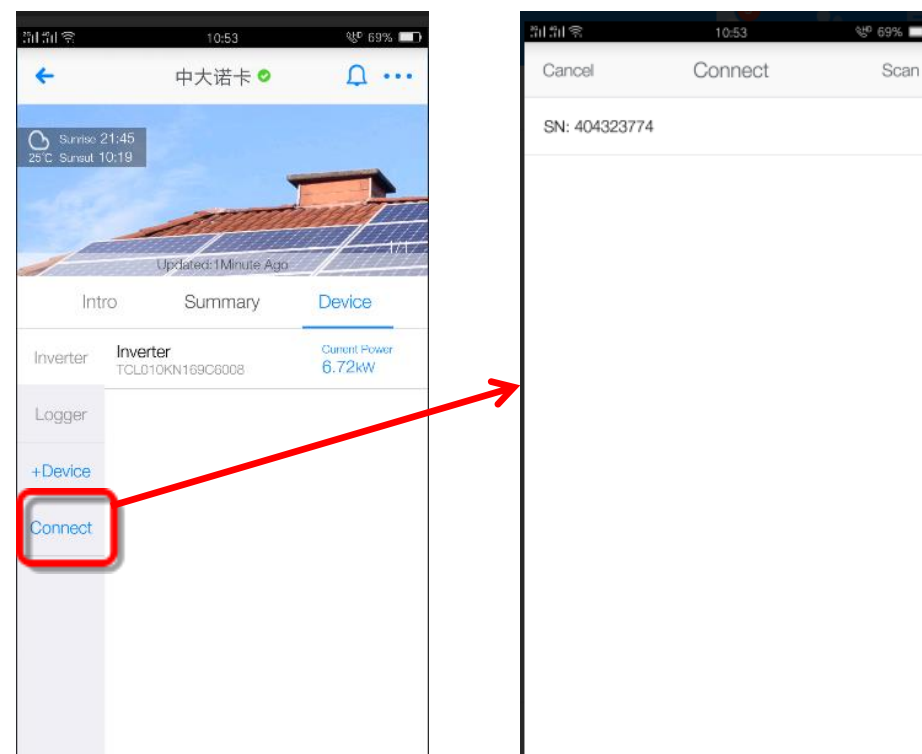
The name of the station is suggested to use your name, and the contact number is recommended to use your mobile phone number so as to have the installer operation in the later period.



## 2.1.2 WiFi Configuration

GPRS datalogger can be automatically connected to the Internet, but if it is WiFi datalogger, we need make datalogger configured to the router connected to the Internet.

1. Enter the plant, click the "device" TAB button, and then click "network" to select the SN.



## 2. WiFi Configuration

### A.For Android users

#### 1.Connect WiFi network, enter password.

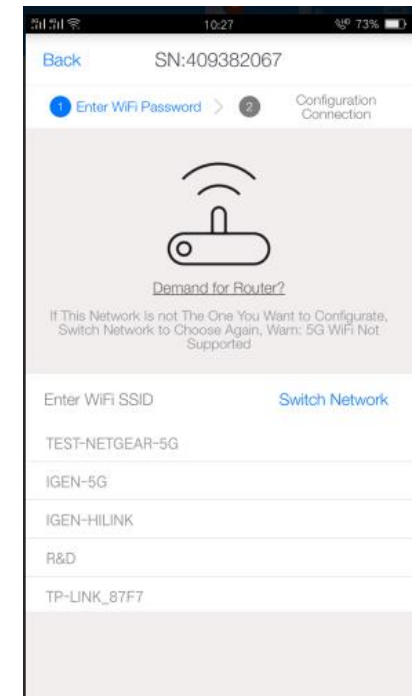
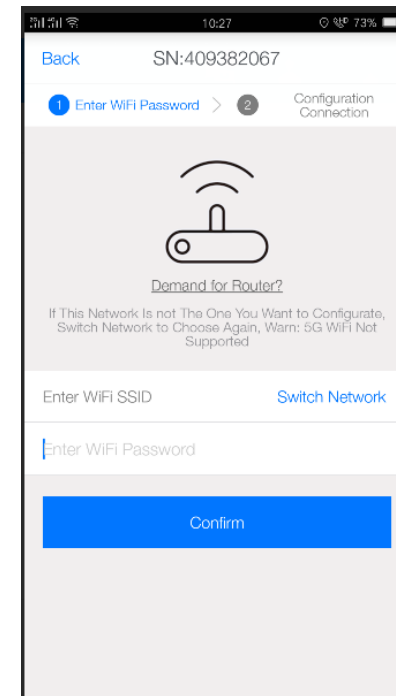
APP will automatically get the current mobile phone to connect to the Internet WiFi account, input WiFi network password to enter the configuration process. If the network is incorrect, please select switch network. You can also manually enter the network account when you switch the network account.

Note: 5G WiFi is not supported.

Tip: if you cannot connect to WiFi, try the following.

- If the signal strength of the selected network is <15%, the connection is unstable, please adjust the router's antenna position or increase the relay.
- Wireless module as the STA mode, the router's channel support range is 1 to 11.
- support WiFi STA router 802.11 b/g/n mode.
- Not support ", """, " ";Special characters. It is suggested that the router's SSID and password use a-z, a-z, and 0-9 characters, such as do not use!@ # \$% & \*,.;'() ""?And other special characters.
- Some enterprises may limit the WIFI connection, so it is recommended closing limit function of the Qos.
- Support the normal routing encryption (WEP/WPAPSK WPA2PSK), does not support mixed multiple encryption methods.
- Open the router's DHCP function, otherwise unable to connect to router wifi.

If you have tried above solutions and still can't connect the router, please reset the router or restore the factory; If still can't use, please contact us to solve.



## 2. Configuration

The system automatically connects the datalogger AP network and automatically starts the configuration after the connection is successful. Please make sure the datalogger is energized and near the phone. If the connection is unsuccessful, the system will require manual connection to the datalogger AP network.

### Tips :

- If you are unable to find the list of wireless networks (AP datalogger SN serial number), please make sure that the datalogger distance with wi-fi routers < 10 meters;
- If the above steps still can't find the AP (datalogger SN serial number), the connection or set may appear problem, need to open the inverter back cover to check the connection module;
- Before troubleshooting, check with your inverter vendor to see if you can open the back cover of the inverter on your own. If not, please contact the inverter manufacturer customer service.

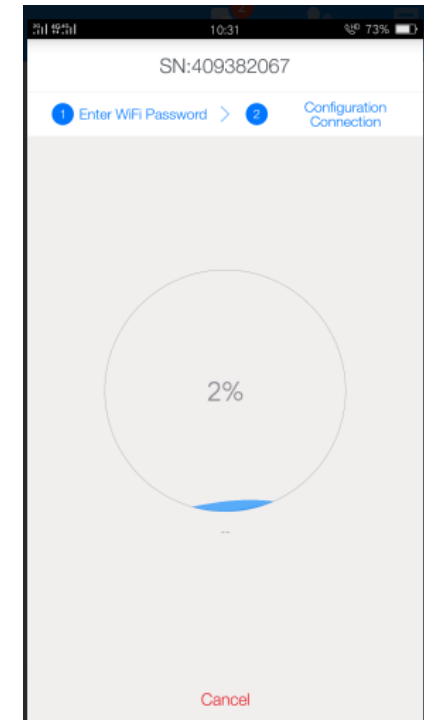
3. Wait 3-5 minutes until the configuration is successful, you can go back to the add device interface and continue to configure other devices.

If the configuration fails, the following reasons may be:

- Please click retry and carefully check the password of the router.
- The router network signal is poor, the distance between the datalogger and the router is too far. Please put the router closer to the datalogger.
- Does not meet the requirements of the datalogger to the router.

If the following situations occur, please reconfigure the network of datalogger devices:

- Router replaced
- WiFi password changed
- Router SSID changed
- Working environment has limited WIFI connections

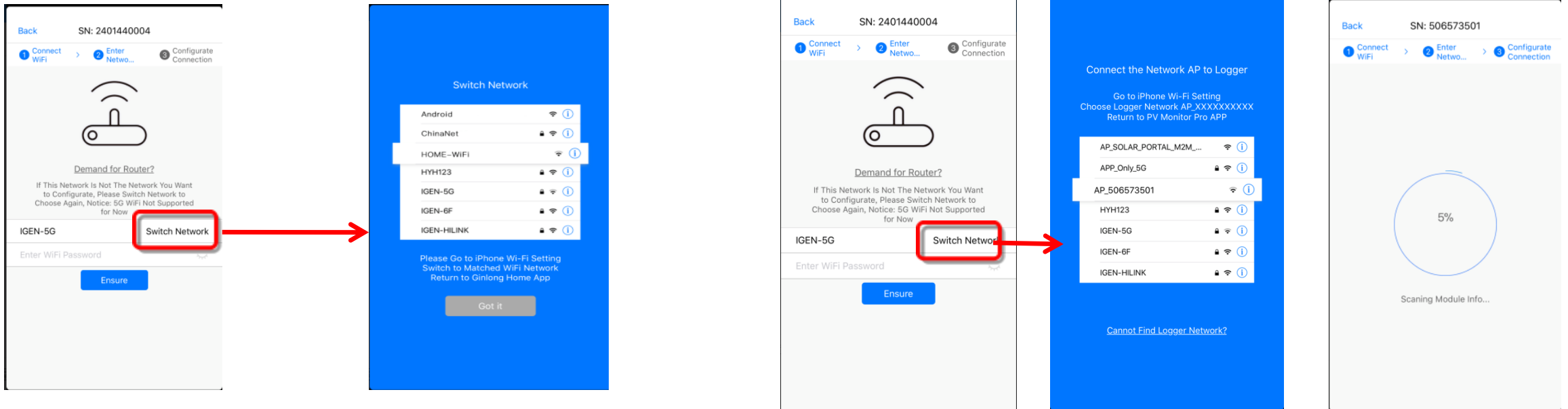


## B. For iOS users

1. Connect WiFi network, enter password.  
APP will automatically get the current mobile phone to connect to the Internet WiFi account, input WiFi network password to enter the configuration process. If the network is incorrect, please go to the iOS settings and select switch network. You can also manually enter the network account when you switch the network account.  
Note: 5G WiFi is not supported.

2. Connect the datalogger AP network.  
Router WiFi network password input finished, click "ok", the system will prompt you to switch to the iPhone's network Settings screen, select AP XXXXXXXX terminal network, and then return to APP, datalogger can begin configuration.

Configuration success and failure status is same as android phones.



### 3.3.2 Edit plant association information.

plant association information means the relation between the editing power station and the merchant.

#### 1. How to connect the plant to the merchant?

The plant created by the owner in the Ginlong home ver. can be connected to the installer. Click the "plant information" and select the installer. Then search the name of the installer and confirm to connect the plant.

#### 2. How to disconnect the plant to the merchant

Owners created by power stations can cancel their association with the merchant. Click on the installer / distributors, select merchants from the list, and click the button "cancel power plant related to the installer" can be cancelled.

