



Data Logging Stick WiFi Quick User Manual

GINLONG-DLS Version: 1.0



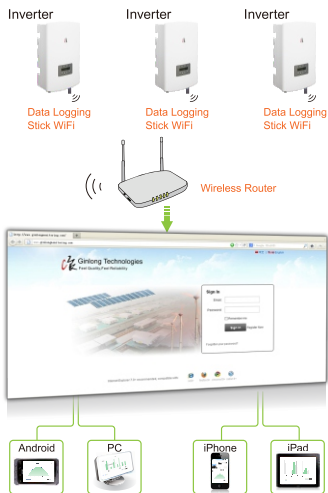
SN:

Delivery Content

- 1 x WiFi
- 1 x Data Logging Stick WiFi Quick User Manual

Introduction

Data Logging Stick WiFi is mainly used in Ginlong inverters to realize simple and quick access to Internet. Users can easily check device information by logging in the monitoring center (www.ginlongmonitoring.com). The communication topology is as shown below:



Description of Symbols

NOTE
"Note" indicates additional information in the document and provides emphasis and supplements to the main contents. It also provides optimized product use skills or tips to save your time.

To ensure normal use of the device, before using the device, be sure that:
a. The connected wireless router can normally access to Internet;
b. The communication address of the inverter is "01". The communication address of inverters can be set on the LCD of inverters.
c. A WiFi-enabled mobile phone or a laptop computer are connected to this device for parameter setting.

1 Electrical Connection

Connect WiFi to the corresponding interface on the inverter. 5K inverter will be used as an example in this manual. Please perform relevant operations as indicated below:



Data Logging Stick WiFi Installation

1. Insert WiFi Stick into RS485/WiFi interface.
2. Fasten the WiFi monitor.

NOTE
The device must be kept away from large metal objects and electrical devices with strong magnetic fields, such as microwave oven, refrigerator, cordless phone, concrete wall, PV panel and metal wall, to ensure the communication quality. Communication quality may be affected in lightning storms.

2 Parameter Setting

2.1 Setting up WiFi connection with iPhone
The WiFi will perform self-check for 30 seconds after power-up. Wait for 30 seconds and then set up wireless network connection to WiFi via a mobile phone, iPad or laptop computer with wireless network adapter or WiFi function. iPhone 4 mobile phone will be used as an example as follows.

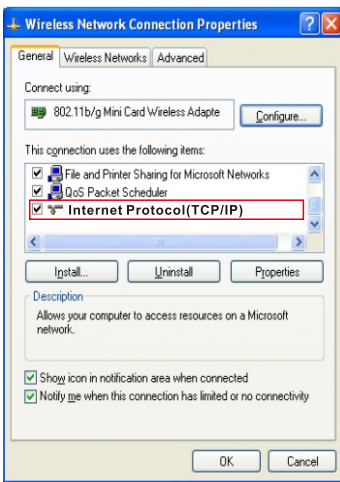
1. Click Setting
2. Select Wi-Fi to enable the Wi-Fi function
3. Start WiFi to search wireless networks
4. **NOTE**
The network number is the serial number of the WiFi Stick. The serial number of WiFi Stick above is AP_501292599.
5. If a tick appears, it indicates the connection is successful

2.2 Connection via WiFi with PC

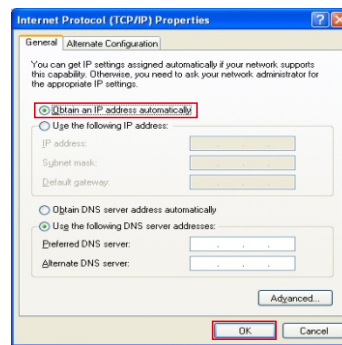
Notice: The setting hereinafter is operated with Windows XP for reference only. If other operating systems are used, please follow the corresponding procedures.

1. Prepare a computer or device, e.g. tablet PC and smartphone, that enables WiFi.
2. Obtain an IP address automatically

1. Open **Wireless Network Connection Properties**, double click **Internet Protocol(TCP/IP)**.

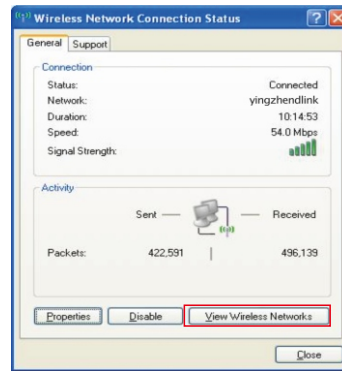


2. Select **Obtain an IP address automatically**, and click **OK**.

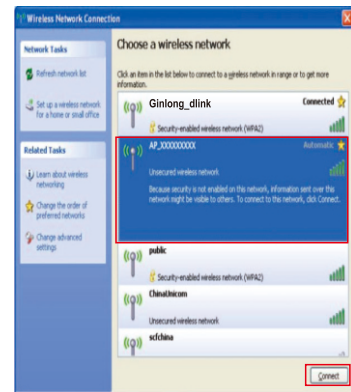


3. Set WiFi connection to the data logger

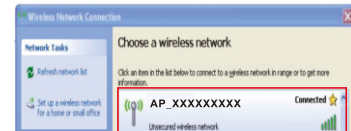
1. Open wireless network connection and click **View Wireless Networks**.



2. Select wireless network of the data logging module, no passwords required as default. The network name consists of **AP** and the **serial number of the product**. Then click **Connect**.



3. Connection successful.



2.3 Set parameters of data logger

(a) Open a web browser, and enter **10.10.100.254**, then fill in username and password, both of which are **admin** as default.

Supported browsers: Internet Explorer 8+, Google Chrome 15+, Firefox 10+

(b) In the configuration interface of data logger, you can view general information of the data logger.

Follow the setup wizard to start quick setting.

1. Click **Wizard** to start.

2. Click **Start** to continue.

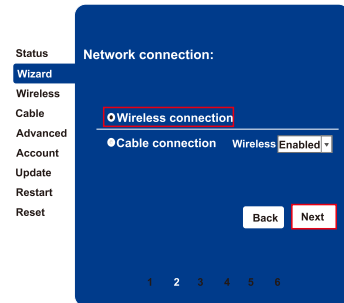
Dear user:

Thank you for choosing our device. Next, you can follow the setup wizard to complete the network setting step by step; or you can select the left menu for detailed setting.

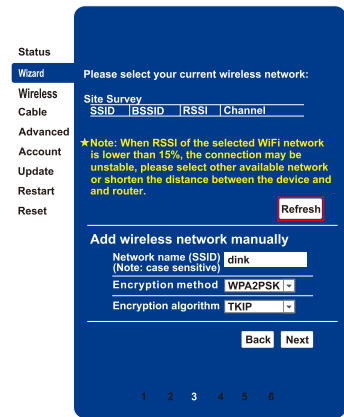
★ Note: Before setting, please make sure that your wireless or cable network is working.

Start

③ Select **Wireless connection**, and click **Next**.

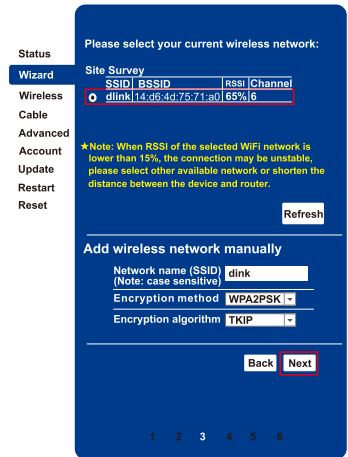


④ Click **Refresh** to search available wireless networks, or add it manually.

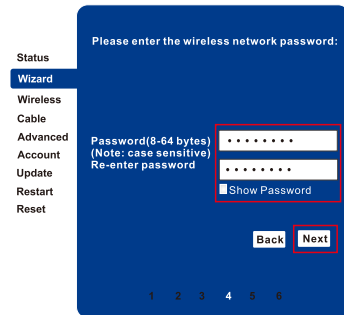


⑤ Select the wireless network you need to connect, then click **Next**.

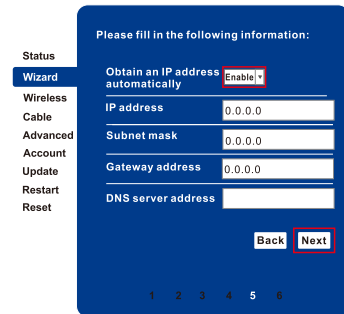
Notice: If the signal strength (RSSI) of the selected network is <10%, which means unstable connection, please adjust the antenna of the router, or use a repeater to enhance the signal.



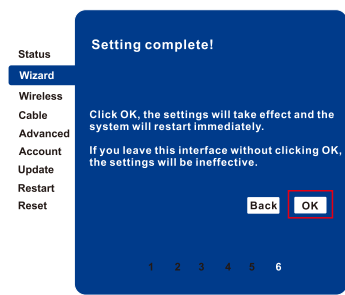
⑥ Enter the password for the selected network, then click **Next**.



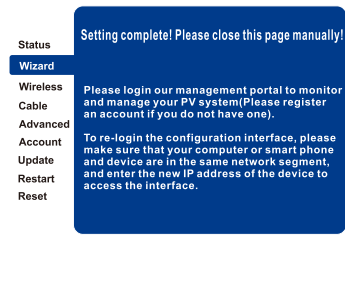
⑦ Select **Enable** to obtain an IP address automatically, then click **Next**.



⑧ If setting is successful, the following page will display. Click **OK** to restart.



⑨ If restart is successful, the following page will display.

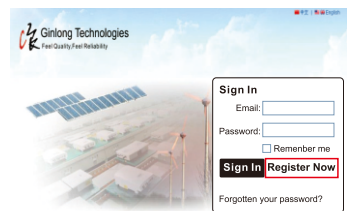


3 Register on Ginlongmonitoring

Open a web browser and visit the Ginlongmonitoring website: <http://www.ginlongmonitoring.com>

Supported browsers: Internet Explorer 8+, Google Chrome 10+, Firefox 9+, Safari 4+

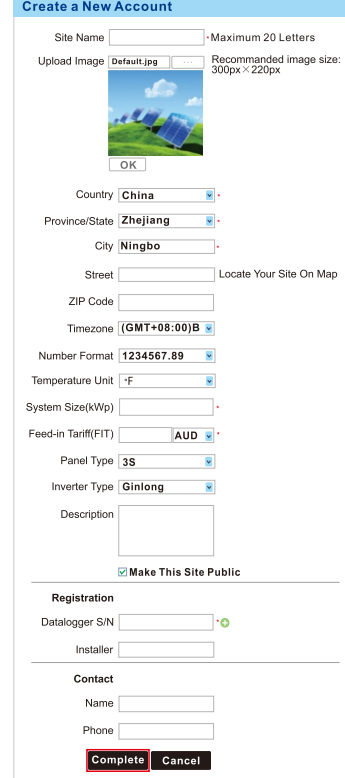
① Click **Register Now**.



② Fill in your email address and password, then click **Next**.

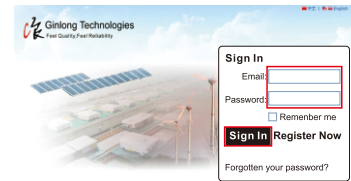


③ Fill in the information as required, then click **Complete**.

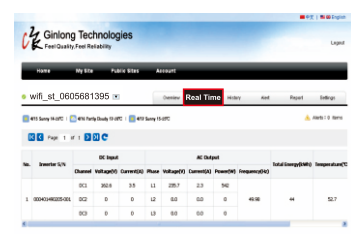


4 Log in Ginlongmonitoring website to manage power station

After successful registration, open the login page of Ginlongmonitoring and input your E-mail and password to access the monitoring system and start monitoring and management of power plants.

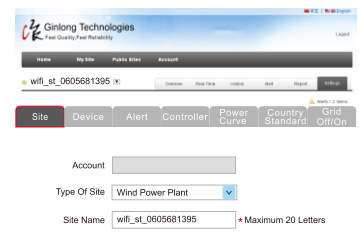


Notice: If users access the monitoring system for the first time within ten minutes after successful registration, please check the "Real Time" interface. If there are data shown in the Real Time interface, network setting of data logger and other connection are deemed successful.

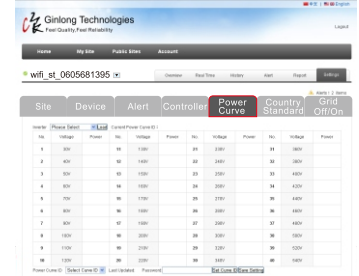


5 Remote setting of Ginlongmonitoring

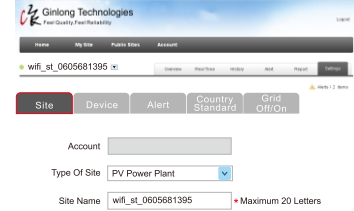
For example, set the station for 'Wind Power Plant' as the following pictures.



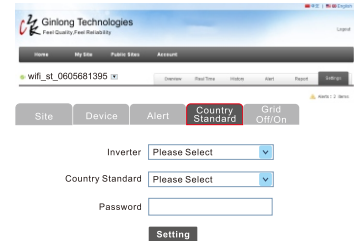
There are four remote setting functions of 'Grid Off/On', 'Country Standard', 'Controller', 'Power Cure' under the 'Setting' choice.



For another example, set the station for 'PV Power Plant' as the following pictures



There are two remote setting functions of 'Grid Off/On', 'Country Standard', under the 'Setting' choice.



Ningbo Ginlong Technologies Co., Ltd.
 NO. 57 Jintong Road, Binhai Industrial Park
 Xiangshan, Ningbo, Zhejiang, 315712, P.R.China
 Tel: +86(0)574 6578 1806
 Fax: +86(0)574 6578 1606
 Email: info@ginlong.com
 Web: www.ginlong.com

Please record the serial number of your monitor and quote this when you contact us.